

Upgrade Your ITV Room & Reduce Costs with the MOREnet Managed Zoom Classroom



Digital Learning Environments included with Full Membership Service Package

Capitalize on your Full Membership Service Package by utilizing the built in Zoom account available to you.

Zoom mobile videoconferencing enables you to support ITV classrooms, hold meetings, training sessions and quick, on-the-go collaborations. With plugins for the major web browsers, Zoom is supported on all major desktop operating systems and both iOS and Android. It offers all the features you've come to expect from a top-tier videoconferencing solution.

Supports the automation of bell schedule

Managed Zoom Classroom provides the ability to automatically join and leave scheduled classes with no user interaction which is typically how ITV classes are currently operated.

Reduce hardware costs

As your legacy videoconference hardware reaches end of life, our subscription package includes both new hardware and software management, while enabling you to reduce overall costs.

Connect with other services

Create a customized digital classroom at a fraction of the cost by combining the power of Zoom with watch.more.net and Canvas. Watch.more.net is our digital store and stream repository that will efficiently deliver high-quality video live and on demand. K-12 members also have the opportunity to use Canvas at a discounted rate, to connect all your digital tools in one place.

Features

- HD video
- HD Voice with dynamic voice detection
- Full screen and gallery view
- Dual stream for dual screen
- Feature-rich mobile apps for iOS and Android
- Join by Zoom Rooms
- Join as view-only attendee
- Join by H.323/SIP room systems
- Join by telephone dial-in
- Accessibility features enable users with disabilities to schedule, attend and participate in Zoom meetings and webinars

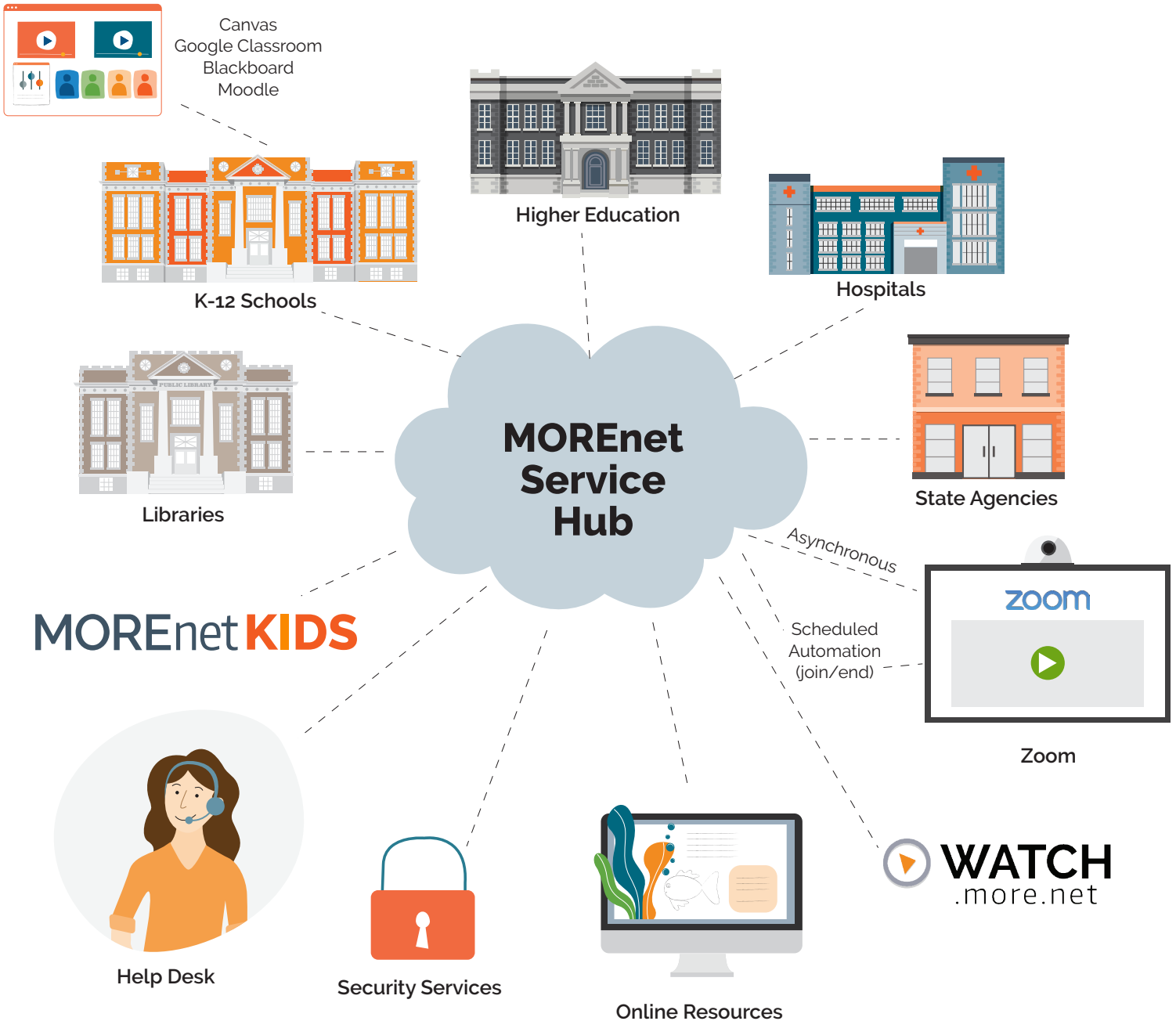
Managed Zoom Pricing

(includes hardware & software)

Typical Classroom: \$800 annually
(15-20 Students)

Add'l Classrooms: \$600 annually
per School District

Integration Overview



Common applications requiring integration into SIS/LMS

- Active Directory
- BrainPop
- Alexandria
- Clever
- Cafe Enterprise Comalex
- Edgenuity
- FastBridge
- Follett Destiny
- Naviance
- Google Classroom
- NWEA
- HMH/ThinkCentral
- Panorama
- iReady
- PLTW
- McGraw Hill
- Moby Max
- SpedTrak
- Pearson
- Renaissance
- Quaver
- ThinkCERCA
- VersaTrans

Revised 3-13-2020